


TECH PACK · Thierry Colson · PS25 BIANCA - SMS 1

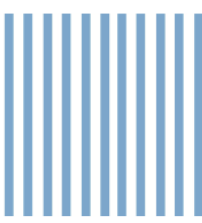
BRAND	Thierry Colson	STYLE REF	BIANCA	DESIGNER	Thierry Colson	DATE	04/05/2024
SEASON	PS25	STYLE NAME	BIANCA	SIZE RANGE	XS-XL	MANUFACTORY	FLS Bulgaria
TYPE	Woman Vest	PATTERN	BIANCA	SAMPLE SIZE	S		

STYLE DESCRIPTION

Cropped women's vest in 100% cotton blue/white stripe (Borghi). Boxy silhouette with kimono-style short sleeves. V-neckline with invisible front closure: flat buttons on front pattern panel, buttonholes on facing. Bias-cut piping in thin stripe (Fabric 2) at shoulder line and all sleeve openings. Two-fabric construction: Fabric 1 (wide stripe) for all main body panels; Fabric 2 (thin stripe) for all facings (front + back) and piping. French seams throughout. Topstitching on all facings. Sample size S.

CONTENT — FABRICS

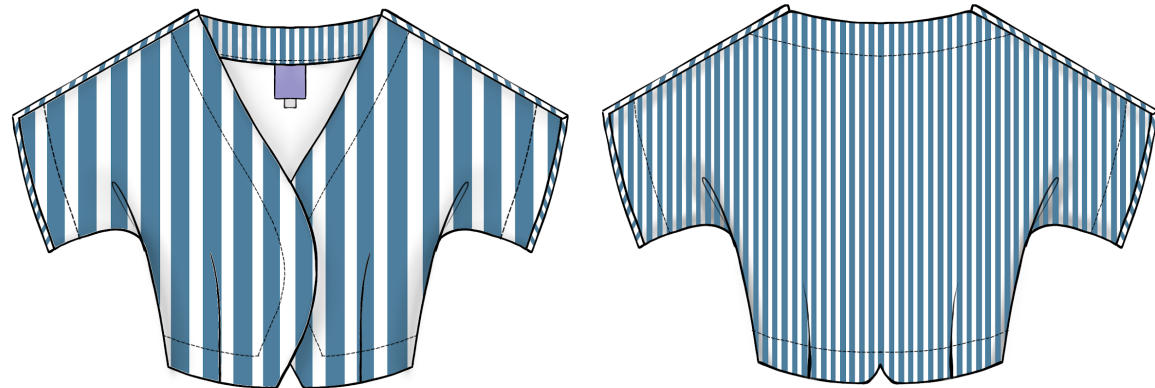
	COMPONENT	Fabric 1 — Wide Stripe (main body)
	SUPPLIER	Borghi
	REF	TF-ST0089
	COL REF	WT0053
	COMPOSITION	100% Cotton

	COMPONENT	Fabric 2 — Thin Stripe
	SUPPLIER	Borghi
	REF	TFTH0765
	COL REF	WT0048
	COMPOSITION	100% Cotton

COLORWAYS

COL REF	BODY COLOUR	TRIM / PIPING COLOUR
BLUE STRIPE	Blue/White — Borghi	Blue/White bias piping

SKETCH



TECH PACK · Thierry Colson · PS25 BIANCA - SMS 1								
BRAND	Thierry Colson	STYLE REF	BIANCA	DESIGNER	Thierry Colson	DATE	04/05/2024	
SEASON	PS25	STYLE NAME	BIANCA	SIZE RANGE	XS-XL	MANUFACTORY	FLS Bulgaria	
TYPE	Woman Vest	PATTERN	BIANCA	SAMPLE SIZE	S			
BILL OF MATERIALS 1 — FABRIC, TRIMS & THREADS								
DESCRIPTION	REF / CODE	SUPPLIER	WIDTH	QTY	SUPPLIED BY	COMMENTS	COL 1	COL 2
FABRIC								
Fabric 1 — Wide Stripe (main body)	TF-ST0089	Borghesi	140cm		Brand	Front — vertical stripe	BLUE/WHITE	
Fabric 2 — Thin Stripe (facings + piping)	TFTH0765	Borghesi	140cm		Brand	Back. All facings (front + back) + piping strips in bias	BLUE/WHITE	
TRIMS								
Cotton cord	CC1098	Fill2000	10m		Brand	shoulder line + sleeve opening edges measure from pattern	WHITE	
Buttons — front closure	11511	Brochot	15mm	3 pcs	Brand	Flat buttons on front pattern panel (Note 1)	NATURAL SHELL	
Button — composition label	11511	Brochot	15mm	1 pc	Brand	Sewn on composition label	NATURAL SHELL	
INTERLINING & STRUCTURE								
Interlining — all facings (fusible light)	INF-L-01	—	140cm		Brand	All facings: front, back neck, both sleeves - full piece coverage	WHITE	
THREADS								
Thread — structural seams	TBC	By manufactory	—		FLS Bulgaria	Match white ground of stripe — Ecrú/off-white	ECRU	
Thread — contrast topstitch	TBC	By manufactory	—		FLS Bulgaria	All 5 topstitch facing zones	ECRU	
Thread — buttonholes + button attach	TBC	By manufactory	—		FLS Bulgaria	Match main thread	ECRU	

TECH PACK · Thierry Colson · PS25 BIANCA - SMS 1

BRAND	Thierry Colson	STYLE REF	BIANCA	DESIGNER	Thierry Colson	DATE	04/05/2024
SEASON	PS25	STYLE NAME	BIANCA	SIZE RANGE	XS-XL	MANUFACTORY	FLS Bulgaria
TYPE	Woman Vest	PATTERN	BIANCA	SAMPLE SIZE	S		

BILL OF MATERIALS 2 — LABELS, TAGS & PACKAGING

DESCRIPTION	REF / CODE	SUPPLIER	WIDTH	QTY	SUPPLIED BY	COMMENTS	COL 1	COL 2
LABELS / TAGS								
Main label	BRAND LABEL			1	BRAND	Centre back neck	BLUE/WHITE	
Size label	S			1	BRAND	Below main label	BLUE/WHITE	
Care label	Care label PS25			1	BRAND	NOT PROVIDED FOR SMS		
Hangtag	Hangtag			1	BRAND		NATURAL SHELL	
Hang tag string	Hang tag string			1	BRAND		NATURAL SHELL	
PACKAGING								
Poly bag	Polybag M			1	BRAND			
Sticker	Sticker			2 pcs	BRAND	1 polybag / 1 hangtag		

TECH PACK · Thierry Colson · PS25 BIANCA - SMS 1							
BRAND	Thierry Colson	STYLE REF	BIANCA	DESIGNER	Thierry Colson	DATE	04/05/2024
SEASON	PS25	STYLE NAME	BIANCA	SIZE RANGE	XS-XL	MANUFACTORY	FLS Bulgaria
TYPE	Woman Vest	PATTERN	BIANCA	SAMPLE SIZE	S		

OUTSIDE VIEW

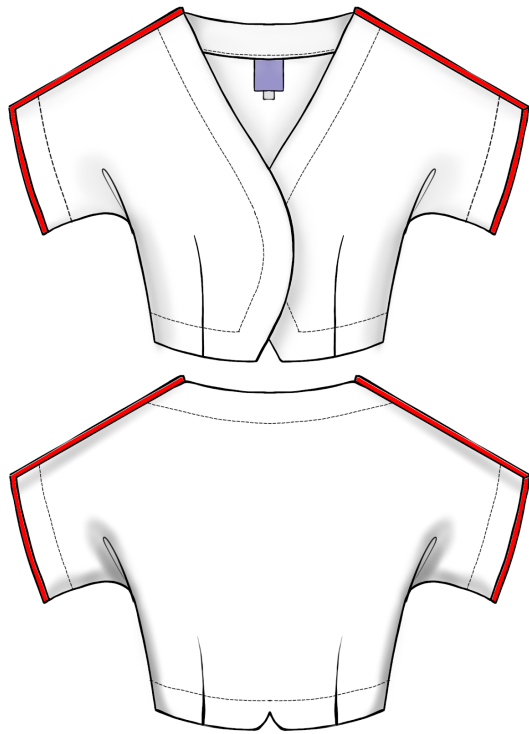


AREA / COMPONENT	CONSTRUCTION DETAIL	STATUS
Fabric 1 — Wide Stripe	Main front. 100% Cotton, Borghi. Vertical stripe orientation.	Confirmed
Fabric 2 — Thin Stripe	Back. All facings: front facing, back facing. Also all piping strips (cut on bias)	Confirmed
TopStitch	5mm lenght. TOPSTICHING (FACING) 1 — Front, 2 — Sleeves (front), 3 — Neck (back), 4 — Sleeves (back)5 — Hem (back)	Confirmed
Neckline	V-neckline. No collar. Front facing visible inside only.	Confirmed
Front closure	Invisible / inside closure. Flat buttons on front pattern (Note 1, Page 5). Buttonholes on facing (Note 2, Page 5).	Confirmed
Button detail	3 × button ref 11511, 15mm, natural shell, Brochot. Flat — not visible from outside.	Confirmed
Piping — shoulder	Thin stripe (Fabric 2) piping in bias. Applied at shoulder line.	Confirmed
Piping — sleeve openings	Thin stripe (Fabric 2) piping in bias. Applied at all sleeve opening edges.	Confirmed
Sleeve	Kimono/boxy short sleeve. No set-in sleeve — cut as one with body panel.	Confirmed
Hem	Back hem topstitched. No piping at hem.	Confirmed
Stripe direction	No stripe matching required at seams. Vertical orientation on all main panels.	Confirmed
Stripe — piping	Piping cut on bias — diagonal stripe direction. Consistent across all piping pieces.	Confirmed
Fabric mapping	Fabric 1 wide stripe: front. Fabric 2 thin stripe: back + all facings + piping only.	Confirmed

TECH PACK · Thierry Colson · PS25 BIANCA - SMS 1

BRAND	Thierry Colson	STYLE REF	BIANCA	DESIGNER	Thierry Colson	DATE	04/05/2024
SEASON	PS25	STYLE NAME	BIANCA	SIZE RANGE	XS-XL	MANUFACTORY	FLS Bulgaria
TYPE	Woman Vest	PATTERN	BIANCA	SAMPLE SIZE	S		

DETAILS — OUTSIDE VIEW · PIPING & CLOSURE PLACEMENT



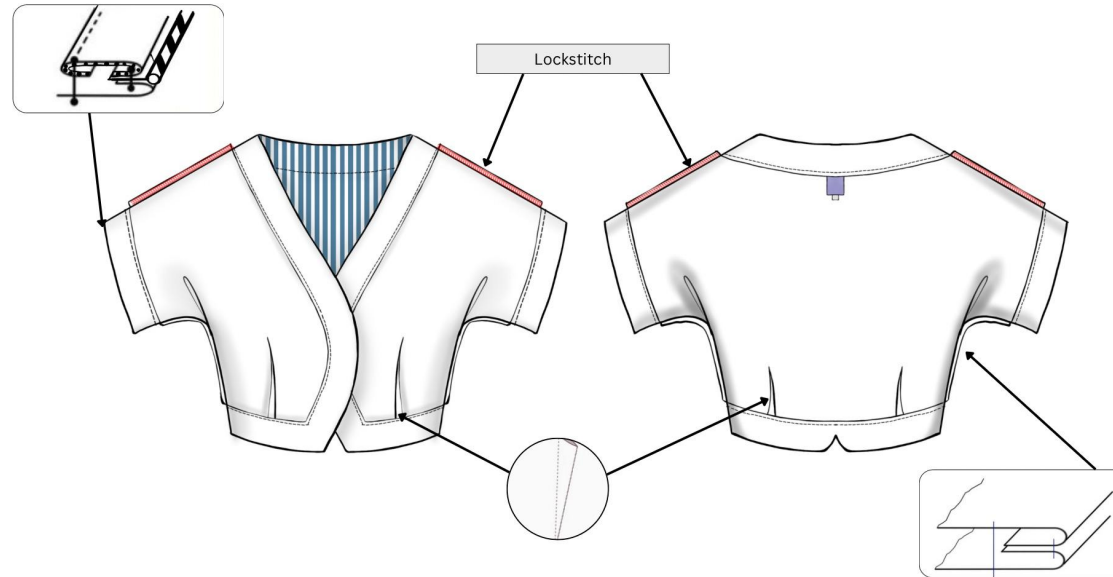
PIPING PLACEMENT MAP

CLOSURE DETAIL

Piping — shoulder	Thin stripe (Fabric 2) piping in bias. Applied at shoulder line.	NOTE 1 - FLAT BUTTONS ON THE FRONT PART OF PATTERN
Piping — sleeve openings	Thin stripe (Fabric 2) piping in bias. Applied at all sleeve opening edges.	NOTE 2 - BUTTON HOLES ON THE FACING

TECH PACK · Thierry Colson · PS25 BIANCA - SMS 1							
BRAND	Thierry Colson	STYLE REF	BIANCA	DESIGNER	Thierry Colson	DATE	04/05/2024
SEASON	PS25	STYLE NAME	BIANCA	SIZE RANGE	XS-XL	MANUFACTORY	FLS Bulgaria
TYPE	Woman Vest	PATTERN	BIANCA	SAMPLE SIZE	S		

INSIDE VIEW



AREA / COMPONENT	CONSTRUCTION DETAIL	STATUS
No lining	Unlined construction. All internal seams finished as French seams throughout.	Confirmed
French seams — all	1st stitch 0.7cm, trim, fold, 2nd stitch 0.8cm. All side + shoulder seams.	Confirmed
Front facing	Fabric 2 — thin stripe. Attached at front edge. Topstitched.	Confirmed
Front facing — sleeve	Fabric 2 — thin stripe. Topstitched at sleeve edge front.	Confirmed
Back facing — neck	Fabric 2 — thin stripe. Topstitched at back neckline.	Confirmed
Back facing — sleeve	Fabric 2 — thin stripe. Topstitched at sleeve edge back.	Confirmed
Hem — back	Fabric 1 — wide stripe. 2cm hem. Topstitched.	Confirmed
Seam allowances	All SA indicated on pattern BIANCA. Side/shoulder: 1.5cm French seam. Hem: 2cm. Facing: 1cm. Piping: 1cm.	Confirmed
Buttonholes	On facing (Note 2, Page 5). 3 × front facing + 1.	Confirmed
Buttons	Flat buttons on front pattern panel (Note 1, Page 5). 3 pcs front + 1 pcs on comp. label.	Confirmed
Main label	Centre back neck, under the facing.	Confirmed
Care label	NOT PROVIDED FOR SMS	Confirmed

TECH PACK · Thierry Colson · PS25 BIANCA - SMS 1							
BRAND	Thierry Colson	STYLE REF	BIANCA	DESIGNER	Thierry Colson	DATE	04/05/2024
SEASON	PS25	STYLE NAME	BIANCA	SIZE RANGE	XS-XL	MANUFACTORY	FLS Bulgaria
TYPE	Woman Vest	PATTERN	BIANCA	SAMPLE SIZE	S		
CONSTRUCTION ORDER — ASSEMBLY SEQUENCE · ALL MEASUREMENTS IN CM							
STEP	PHASE	OPERATION	DETAIL / INSTRUCTION	STITCH TYPE	FOOT / TOOL	QC CHECK	
1	PREP	Fuse interlining — all facings	Iron fusible light (INF-L-01) onto all 4 facing pieces flat: → Front facing → Back neck facing → Sleeve facing L → Sleeve facing R	No stitch — fusing	Iron / press cloth	Full coverage, no bubbles or lifting	
2	PREP	Make buttonholes — front facing	Bartack buttonhole stitch on facing piece BEFORE attachment: → ×3 on front facing → ×1 on composition label facing Done flat for control	Bartack / buttonhole stitch	Buttonhole foot	Spacing even, clean cut, no fraying	
3	PREP	Prepare corded piping	Cut Fabric 2 (thin stripe) on bias. Fold bias strip around 2mm cotton cord. Lockstitch close to cord — enclose fully.	Lockstitch	Zipper foot	Cord fully enclosed, consistent width throughout	
4	SEW	Sew waist darts — FRONT	Lockstitch, press toward CF	Lockstitch	Standard presser foot	Point clean, pressed toward CF, check dart intake consistent L vs R	
5	SEW	Sew waist darts —BACK	Lockstitch, press toward CB	Lockstitch	Standard presser foot	Point clean, pressed toward CB, check dart intake consistent L vs R	
6	SEW	Attach piping — shoulder line	Baste corded piping to FRONT shoulder edge. Lockstitch 1cm SA. Front panel only at this stage.	Lockstitch	Zipper foot	Piping even, no twisting	
7	SEW	Attach piping — sleeve openings	Baste corded piping to ALL sleeve opening edges: → Front panels (L + R) → Back panels (L + R) Lockstitch 1cm SA.	Lockstitch	Zipper foot	Check symmetry L vs R	
8	SEW	Sew shoulder seams	Sandwich piping between front + back panels. Plain seam 1.5cm — lockstitch. SA overlocked (both SA together). NOTE: No French seam on shoulder — piping incompatible.	Lockstitch + overlock	Zipper foot + overlock foot	Piping centred, seam flat, SA clean	
9	SEW	Sew side seams	French seam: → 1st stitch: 0.7cm WS together → Trim SA → Fold RS together → 2nd stitch: 0.8cm No piping on side seams.	Lockstitch ×2 (French seam)	Standard presser foot	Seam flat, no raw edges visible	
10	SEW	Attach front facing	Attach faced front panel (buttonholes already done). Lockstitch 1cm. Topstitch: → Zone 1: front edge → Zone 2: sleeve opening front	Lockstitch + topstitch	Standard / edge foot	Topstitch straight, even from edge	
11	SEW	Attach back neck facing	Attach back neck facing. Lockstitch 1cm. Topstitch: → Zone 3: back neckline	Lockstitch + topstitch	Standard / edge foot	Check neckline shape consistent	
12	SEW	Finish sleeve openings with facing	Attach sleeve facings (already fused). Lockstitch 1cm. Topstitch: → Zone 2: sleeve front (if not done in step 8) → Zone 4: sleeve back	Lockstitch + topstitch	Standard / edge foot	Check symmetry L vs R	
13	SEW	Hem — back	Fold 2cm hem — back panel. Lockstitch. Topstitch: → Zone 5: back hem	Lockstitch + topstitch	Standard / edge foot	Hem level, consistent depth	
14	FINISH	Sew buttons	Attach flat buttons on front pattern panel (Note 1): → ×3 front → ×1 on composition label Bartack reinforcement at each button.	Lockstitch + bartack	Button foot	Buttons flat, secure, aligned with buttonholes	
15	FINISH	Final press	Medium heat — no steam directly on stripe fabric. Press all seams flat. Check all topstitching and piping.	No stitch	Iron / press cloth	No shine marks. All seams flat. Piping round and even.	

TECH PACK · Thierry Colson · PS25 BIANCA - SMS 1											
BRAND	Thierry Colson	STYLE REF	BIANCA	DESIGNER	Thierry Colson	DATE	04/05/2024				
SEASON	PS25	STYLE NAME	BIANCA	SIZE RANGE	XS-XL	MANUFACTORY	FLS Bulgaria				
TYPE	Woman Vest	PATTERN	BIANCA	SAMPLE SIZE	S						
MEASUREMENT CHART — ALL MEASUREMENTS IN CM · GARMENT FLAT (x2 FOR CIRCUMFERENCES)											
#	POINT OF MEASURE	HOW TO MEASURE	TOL+	TOL-	XS	S	M	L	XL	SAMPLE S	NOTES
VEST BODY — LENGTHS & WIDTHS											
1	Back Length CBL	CB neck seam to hem, straight down	±0.5	±0.5	41	42	43	44	45	42	
2	Front Length CF	CF neck point to hem	±0.5	±0.5	37	38	39	40	41	38	
3	Shoulder Width	Shoulder pt to shoulder pt across back	±0.5	±0.5	36	38	40	42	44	38	Grade 2cm/size
4	Across Back	Midway neck–armhole, straight across	±0.5	±0.5	33	35	37	39	41	35	
VEST CIRCUMFERENCES (GARMENT FLAT × 2)											
5	Chest (1cm below armhole, ×2)	Straight across 1cm below armhole	±1.0	±1.0	92	96	100	104	108	96	~8cm ease
6	Hem width (×2)	Straight across hem edge	±1.0	±1.0	86	90	94	98	102	90	
SLEEVE											
7	Sleeve Length	Shoulder seam to sleeve hem edge	±0.5	±0.5	21	22	23	24	25	22	
8	Sleeve Opening Width (×2)	Straight across sleeve hem opening	±0.5	±0.5	30	32	34	36	38	32	
NECKLINE											
9	Neck Opening Width	Straight across neckline	±0.5	±0.5	17	18	19	20	21	18	
CLOSURE & DETAILS											
10	Front overlap (button to edge)	From button centre to front edge	±0.3	±0.3	TBC	TBC	TBC	TBC	TBC	TBC	Confirm w/ design
PIPING & FINISHING											
11	Piping width (finished)	Visible piping roll — shoulder/sleeve	±0.2	±0.2	0.5	0.5	0.5	0.5	0.5	0.5	Fixed
12	Hem allowance	Hem fold from hem edge — back	±0.3	±0.3	2	2	2	2	2	2	Fixed